

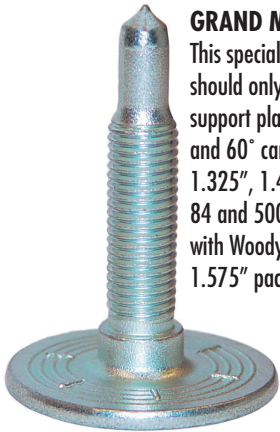
### **GOLD DIGGER® TRACTION MASTER® 60° CARBIDE STUDS**

US Patent No. 5,234,266 and Canadian Patent No. 2,086,186

The world standard all other traction devices are measured against and not one has met the challenge. A sharp 60° carbide tip gives you superb trail traction and durability on hard pack snow and ice when installed with the corresponding Digger® support plate. The 7mm thread is offered in .750" through 1.000" in lengths with a 7/8" head. The 5/16" thread is offered in .875" through 1.450" in lengths with a 1" head. Available in 24, 96, 144 and 1,000 piece packages that include lock nuts. (1.325" & 1.450" packages come with Woody's aluminum ALN2-4500 Big Nuts.)

### **GRAND MASTER® STUDS**

This special stud is designed for single-ply tracks and should only be used with Woody's Grand Digger® support plates. It has a 1.200" head, 5/16" shank and 60° carbide tip. Available in four lengths, 1.075", 1.325", 1.450" & 1.575" in quantities of 12, 48, 84 and 500. (The 1.325" & 1.450" packages come with Woody's aluminum ALN2-4500 Big Nuts and the 1.575" packages come with ALN2-7000 Big Nuts.)



### **SIGNATURE SERIES 60° CARBIDE STUDS**

Woody's combines the advantages of stainless steel with their performance proven designs at a competitive price. The high corrosion resistance allows you to use the Signature Series™ in rigorous environments. The 5/16" shank and the 15/16" head ensures you a reliable grip on the trail with the 60° carbide tip. Available in sizes 1.000" through 1.450" in quantities of 24, 48, 96, 144 and 1,000 piece packages that include lock nuts. (1.325" & 1.450" packages come with Woody's aluminum ALN2-4500 Big Nuts.)



### **30° ELIMINATOR™ TRACTION MASTER® STEEL STUDS**

US Patent No. 5,234,266 and Canadian Patent No. 2,086,186

For competition only.

The narrow profile of this 30° point stud is designed for speed runs and drag competition. The 7mm thread is offered in lengths of 1.000" and 1.200" with a 7/8" head. The 1/4"-28 thread is offered in lengths of .700" through 1.060" with a 3/4" head. Available in packages of 48 that include lock nuts.



### **MEGA-BITE® 60° CARBIDE STUDS**

US Patent No. D415954 and Canadian Patent No. 88,613

The absolutely unique design of four flat sides on the penetration portion of the tough 5/16" shank provides additional contact surface for added acceleration, deceleration and directional control under changing trail conditions. Professional snocross racers love the enhanced controllability the Mega-Bite® delivers. Available in sizes .875" through 1.450" for trail riding and 1.575" & 1.740" for snocross racing. Lengths of .875" through 1.325" are offered in quantities of 24, 96, 144 and 1,000. Lengths 1.450" through 1.740" are offered in quantities of 24, 96 and 1,000. Include lock nuts. (1.325" & 1.450" packages come with Woody's aluminum ALN2-4500 Big Nuts and the 1.575" & 1.740" packages come with ALN2-7000 Big Nuts.)

### **GRAND MASTER PRO™ STUDS**

Secure your lead with Woody's Grand Master Pro™. These customized studs have a 60° carbide tip and shank giving you consistent traction on hard-packed snow and ice. The Grand Master Pro™ has a 1.200" head. Offered in four lengths; 1.075", 1.325", 1.450" and 1.575" in packages of 48 pieces. Packages of 1.325" & 1.450" come with ALN2-4500 Big Nuts and the 1.575" packages come with ALN2-7000 Big Nuts.



### **GRIPPER™**

Woody's Gripper™ carbide stud is environmentally, budget and driver friendly. It will help you drive your tractor or groomer up and down icy hills, around icy corners and stop slipping on uneven trail terrain. Available in two sizes: 1 1/4" for Tractor tires and 1 1/2" for Groomer tracks. The Gripper™ has a solid brazed carbide tip and is made of a 5/16" self-tapping high grade steel shank. Sold in packages of 100, 250, 500 or 1,000 pieces.



### **45° MODIFIED GOLD DIGGER® TRACTION MASTER® CARBIDE STUDS**

US Patent No. 5,234,266 and Canadian Patent No. 2,086,186

Definite Traction is what you will receive with this stud's 45° machine ground point. Perfect for deep penetration and acceleration on the hardest ice. The 7mm thread is offered in .750" through 1.000" in lengths with a 7/8" head. The 5/16" thread is offered in 1.000" through 1.450" in lengths with a 1" head. Available in package quantities of 48 that include lock nuts. (1.325" & 1.450" packages come with Woody's aluminum ALN2-4500 Big Nuts.)



### CHISEL TOOTH™ TRACTION MASTER® STEEL STUDS

US Patent No. 5,234,266 and Canadian Patent No. 2,086,186

The Chisel Tooth™ Traction Master® penetrates like a pointed stud but acts like a scooper with a flat surface for traction. The 7mm thread is offered in lengths of .750" through 1.200" with a 7/8" head. The 5/16" thread is offered in lengths of 1.075" through 1.325" with a 1" head. Available in packages of 48 that include lock nuts. (1.325" packages come with Woody's aluminum ALN2-4500 Big Nuts.)

### CHISEL TOOTH™ STEEL STUDS

DIG DEEP with Woody's 1.630" and 1.860" CHISEL TOOTH™ studs. These lengthy steel studs are the key to kicking your competitors' tail. Woody's Chisel Tooth™ penetrates like a dagger and scoops like an excavator. The longer Chisel Tooth™ is designed for Hill Climb/Drag and Ice Lake Racers. The overall installed heights are 1.88" and 2.11". Both lengths have a 5/16" shank and a 15/16" head and are available in packages of 48 pieces that include Woody's aluminum Big Nuts. When using studs of these lengths it is essential to have proper clearance and tunnel protection. Competition use only.



### SNOXCROSS 60° RACE STUDS

For competition only.

This 5/16" thread stud is offered in a 1.860" length with a 15/16" head. Available in packages of 24, 96 and 1,000 that include Woody's aluminum ALN2-7000 Big Nuts.



### TRIGGER™

Woody's Trigger™ stud is the necessary ammunition for lake racers. The Trigger™ has a long and narrow profile providing you with unmatched penetration. Its 60° carbide tip, 5/16" shank and 15/16" head make it durable enough for any lake conditions you find. Offered in 1.450" and 1.630" lengths. The overall installed heights are 1.70" & 1.88". This race stud is available in packages of 48 pieces that include Woody's aluminum Big Nuts. When using studs of these lengths it is essential to have proper clearance and tunnel protection. Competition use only.



### CHISEL TOOTH™ STEEL STUDS

Snap-Off® studs are covered by US Patent No. 5,716,112 and Canadian Patent No. D84,609

For competition only.

Race proven, through-hardened alloy steel, T-nut Chisel Tooth™ stud is the secret to winning grass and ice drags. Its flat blade penetrates and grabs the surface for maximum traction. This single point stud works like a scooper stud but with greater penetration. These standard T-nut style and Snap-Off® T-nut style studs are offered in 1/4"-20 and 7mm threads in lengths of .700" through 1.200". Available in packages of 48; studs only.

### 30° STEEL ELIMINATOR™

For competition only.

Ideal for drag racing and speed runs this steel stud has a thin taper profile and a 30° point for maximum penetration on hard ice. The .370" thread length can be used on all rubber tracks. These standard T-nut style studs are offered in 1/4"-20 and 7mm threads in lengths of .700" through 1.200". Available in package quantities of 48.



### CHISEL TOOTH™ HOOKER®

For competition only.

The Chisel Tooth™ Hooker® is a drag racer special. Studs screw into Hooker plates for fast track-side stud changes and replacement. Designed for straight line traction and resistance to sliding in corners. .800" in length with 1/4"-20 thread. Available in package quantities of 48.



### 30° STEEL DRAG ELIMINATOR™

For competition only.

This stud has a thread length of .270". It was designed not to interfere with the suspension wheels on thin belted tracks. It has a thin body tapered to a 30° point for penetrating the hardest ice for drag racing. This 1/4"-20 threaded stud is offered in lengths of .700" through 1,000". Available in package quantities of 48.



### 40° STEEL HOOKER® ELIMINATOR™

For competition only.

This Hooker® stud screws into Hooker plates to use the sled's weight, transmitted through the slide rails, for extremely positive traction. Select this stud for hard ice race tracks. This 1/4"-20 threaded stud is offered in lengths of .440" through .900". Available in package quantities of 48.



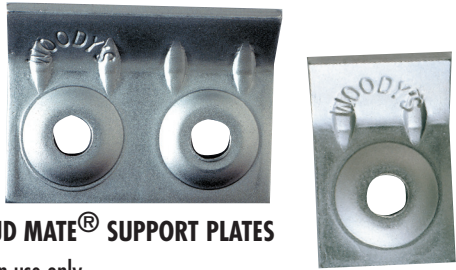
### WIDE BODY CHISEL TOOTH™ STEEL STUD

US Patent No. D551,544 and Canadian Patent No. 115,499

For competition only.

The Wide Body Chisel Tooth™ stud is a proven winner. Its 37% increase in surface area on the flat face, over a standard Chisel Tooth™ stud, is the key to winning drag races. The through-hardened, alloy steel flat blade penetrates and grabs soft or loose conditions for maximum traction. The Wide Body Chisel stud should be used in combination with another competition stud for optimum results. This 1.060" T-nut style stud has a 7mm thread and is available in packages of 48.





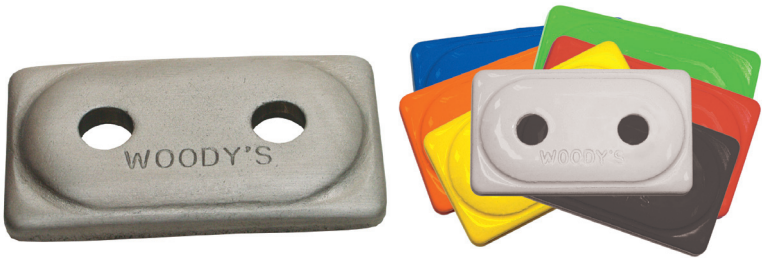
**BENDER STUD MATE® SUPPORT PLATES**

For competition use only.  
 This exclusively designed 7mm aluminum support plate provides ultimate traction and control with its 45° angle that lies flush against the track and the track lug. Available in package quantities of 12 and 48.



**ALUMINUM SQUARE DIGGER® AND ROUND DIGGER® SUPPORT PLATES**

No compromise in the integrity of the aluminum square and round Digger® support plates with the weight difference. Almost 50% lighter than the steel counterparts. Ideal for performance trail riders that know a little difference can make a big difference. The aluminum support plates are available in square sizes of 7mm x 1-1/8" and 5/16" x 1-1/4" and the round in 5/16" x 1-3/8" in quantities of 24, 96, 144 and 1,000 and 7mm x 1-1/8" diameter in quantities of 24, 96 and 1,000.



**DOUBLE DIGGER® ALUMINUM SUPPORT PLATES**

The original Double Digger® dual configuration allows you to install two studs with less weight than two single support plates. The Double Digger® increases your options for studding in the middle belt. The versatility of the Double Digger® makes it a favorite with professional snocross racers. This tough support plate is strong enough to handle two studs. Available uncolored in 5/16" in quantities of 12, 48 & 500 and 7mm in quantities of 12 and 48. Or choose from 5/16" green, red, blue, yellow, orange, black or white in quantities of 48.



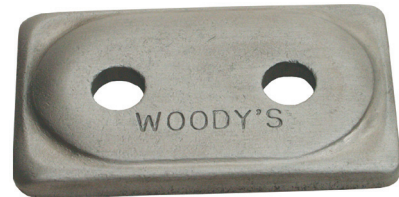
**ANGLED DIGGER® ALUMINUM SUPPORT PLATES**

This unique 7° angled design Digger® support plate holds the stud off perpendicular from the track. Under load the stud moves to perpendicular enhancing the consistency of acceleration and aiding the stud to resist going past perpendicular in the other direction. A unique concept and it works. Available in 5/16" and 7mm in quantities of 24, 96, 144 and 1,000.



**ALUMINUM ROUND DIGGER® AND SQUARE DIGGER® COLORED SUPPORT PLATES**

Your Preference and imagination is all that is needed to individualize your sled with colored aluminum support plates. Customize with 5/16" x 1-1/4" square or 5/16" x 1-3/8" round aluminum powder coated support plates. Stand out in the crowd! Choose from green, red, blue, yellow, orange, black or white. Colored square are offered in quantities of 24, 96, 144 and 1,000. Colored round are offered in quantities of 48.



**ANGLED DOUBLE DIGGER® ALUMINUM SUPPORT PLATES**

An awesome design taken one step further. The Double Digger® and the 7° Angled Digger® support plate designs have proven so effective separately, imagine what they will do together. Weight reduction and acceleration assistance rolled into one product. Available in 5/16" and 7mm in quantities of 12 and 48.



US Patent No. D547237

**TRIANGLE DIGGER® ALUMINUM SUPPORT PLATES**

The Triangle Digger® support plate provides added performance. When studding a track using these support plates, the unique shape generates less rotating resistance which will result in ease of track rotation. Available in 5/16" and 7mm in packages of 48 and 1,000.



**GRAND DIGGER® ALUMINUM SUPPORT PLATES**

Grand Digger® support plates are specifically designed for use with the Grand Master™ stud. Round and Square Grand Diggers® are offered in quantities of 12, 48, 84 & 500 and the Double Grand Digger® is available in quantities of 12, 48 & 250. Woody's Round Grand Digger® support plates are not to be used on 2.52 pitch tracks.



### BIG NUT

Big Nut with a nylon insert. The aluminum 5/16" - 24 Big Nuts provide added support to longer length studs. Offered in two sizes. Use ALN2-7000 for 1.575" studs and longer and use ALN2-4500 for 1.325" to 1.450" studs. Offered in 24, 96 and 1,000 piece packages.



### LOCK NUTS

Nylon inserts help prevent nuts from loosening. Available in steel 5/16" and 7mm, stainless 5/16" in package quantities of 48 and 1,000.



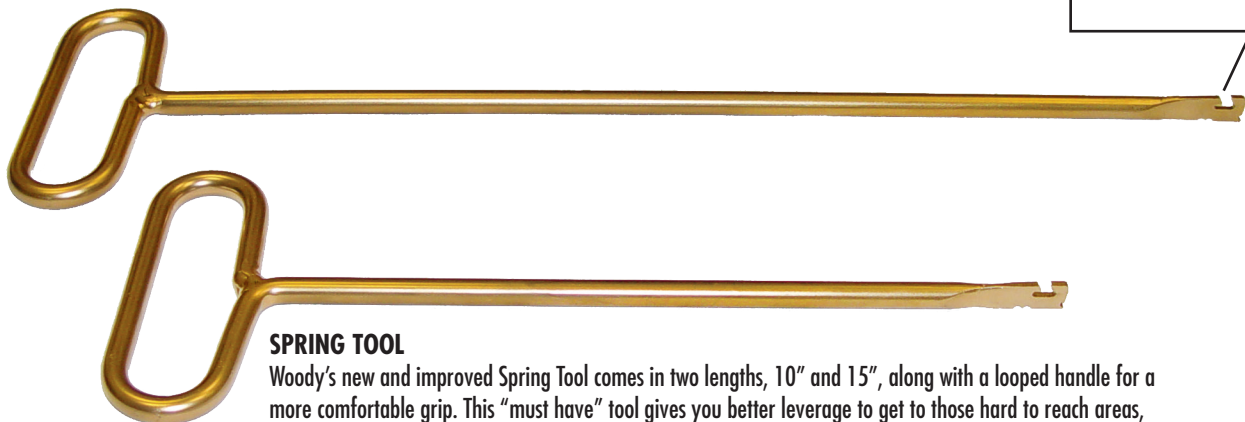
### TRACK MARKER

Excellent tool for marking stud patterns on your track. Choose your pattern, place the template over the track and mark the track in the center of the appropriate holes with a white dot. You can review the entire stud pattern on your track before drilling, eliminating stud placement errors.



### TRACK TENSION TOOL

Make sure the tension of your track is correct. Use Woody's Track Tension Tool to help stay within the manufacturer's guidelines.



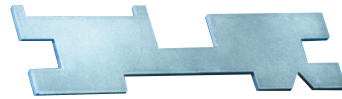
### SPRING TOOL

Woody's new and improved Spring Tool comes in two lengths, 10" and 15", along with a looped handle for a more comfortable grip. This "must have" tool gives you better leverage to get to those hard to reach areas, getting you back out on the trail/track quicker. Use this tool to push, pull or twist springs into place. Made in the USA.



### DISHED 15/16" & 3/4" T-NUTS

Woody's has redesigned its line of T-nuts to better accommodate the needs of the dealer and end user. This new design uses Woody's proven Track Trapping Principle to gain extra track holding capability. The material of this new T-nut is stronger and thicker to allow tighter thread tolerance. The 15/16" T-nut is available in 1/4-20 and 7mm thread. The 3/4" has a 1/4-20 thread. Sold in packages of 48.



### SPEC GAUGE

Race legal installation of studs and carbide runners in oval, drag and snocross racing need precise measurements. The Spec Gauge conforms to ISR regulations. No racer should be without one.



### SHIM WASHERS

Use these shim washers to fine tune desired stud height. For 1/4" studs use aluminum shims. For 7mm studs use steel shims. 48 shims per package.



### STUD HOLE DRILL

Perfect every time makes studding easy. The hollow drill for 7mm or 5/16" studs makes a precise opening for installing studs. No mistakes.







### INDEXING TOOL FOR SQUARE DIGGER® SUPPORT PLATES

Parallel edges are essential. Square Digger® support plates should run parallel with the edge of the track to increase the longevity of the stud and support plate. The indexing tool is a real time-saver that easily aligns square Digger® support plates with the edge of the track. Fits on a standard 3/8" drive ratchet.



### INDEXING TOOL FOR TRIANGLE DIGGER® SUPPORT PLATES

Align your Triangle Digger® support plates by using this specialized Indexing Tool. To be used with a 3/8" ratchet. Can be used for both 5/16" and 7mm Triangle Digger® support plates.

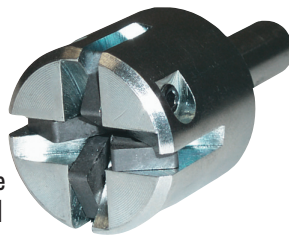


### INDEXING TOOL FOR SQUARE GRAND DIGGER® SUPPORT PLATES

Specially made for the larger Square Grand Digger® support plates. Square support plates should run parallel with the edge of the track to increase the longevity of the stud and support plate. The indexing tool is a real time-saver that easily aligns square support plates with the edge of the track. Fits on a standard 3/8" drive ratchet.

### STEEL STUD SHARPENING TOOL

Easy to use tool to sharpen your studs while they are in the track. Available in 30°, 45° and 60° angles. (Use with steel studs only)



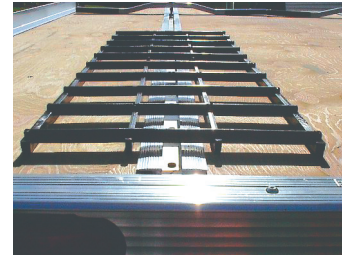
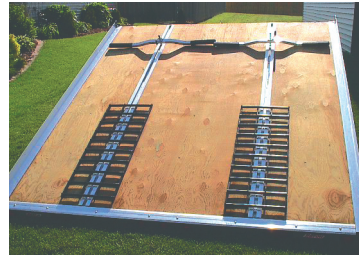
### WOODY'S DIE CUT DECAL KIT

Woody's die cut decals in a 4 piece quantity kit. Each kit includes 2- 2" x 6" orange and 2- 2" x 6" white decals.



### SHALLOW SOCKET TOOL

The no touch concept of this unique tool provides the torque to tighten lock nuts while installing push-through studs without touching the surface of the Digger® support plate. Works ideal with colored Digger® support plates. Available in 5/16" and 7mm sizes.

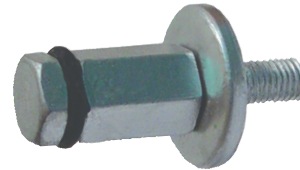


### PADDEGRABBER

The ultimate trailer protection. The Paddlegrabber preserves the trailer deck, increases traction on the trailer, enhances safety and is easy to install. The strong lightweight design is also perfect for enclosed trailer doors. It is adjustable to fit any trailer; one standard set covers an area 16" W x 47" - 57" L. The self-cleaning design doesn't trap water or salt that may ruin decks.

### T-NUT PULLER

Reduce the time required to stud your track. Simple to use. Fits 3/8" square drives and 3/8" drills. Through-hardened for durability.



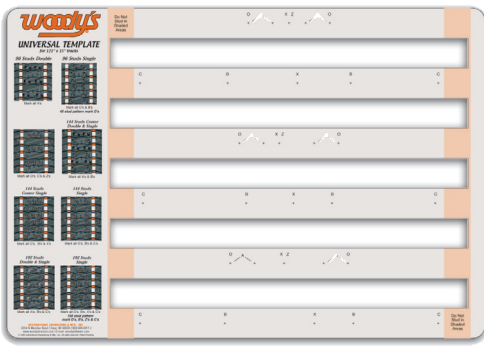
### STUD HEX TOOL

Use this tool for installing and removing push-through studs. The handle is made from premium aluminum. Each tool comes with an extra hex bit. A replacement hex package is also available that contains two hex bits.



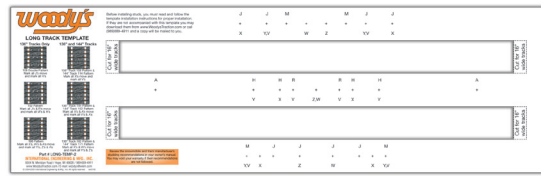
### SNOW FLAP STRAP KIT

Safety and Performance is what Woody's is all about! Install the Snow Flap Strap Kit to anchor your snow flap for added riding security. This kit will fit all makes and models of snowmobiles and contains all the fastening devices needed to install the straps.



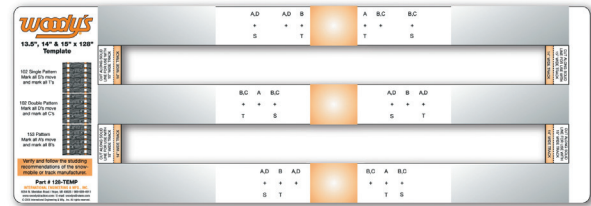
### UNIVERSAL TEMPLATE

Guess work is gone when you are looking for a pattern. At a glance you have Trail, Performance and Double Digger<sup>®</sup> studding patterns available. Choose the best stud pattern for your riding style, terrain and the performance capabilities of your sled. The Woody's<sup>®</sup> Universal Template has patterns from 48 to 192 studs. For 48, 72 and 168 stud pattern illustrations refer to Woody's website at woodystraction.com. Fits 15" wide track configurations. Available in laminated heavy card stock or clear polycarbonate.



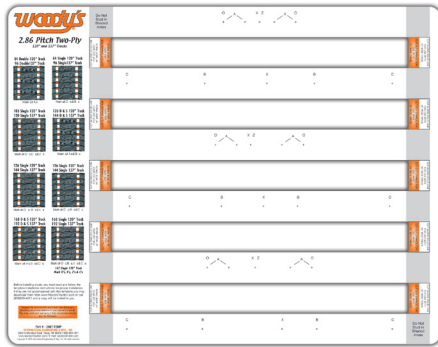
### LONG TRACK TEMPLATE

A special Long Track Template to fit tracks 15 x 136" and 15 x 144" with an added cut-away feature to make expandable for 16" wide tracks. It has multiple options for center belt studding with or without Double Digger<sup>®</sup> support plates. Patterns of 108, 144, 162 and 198 studs for 136" tracks and patterns of 114, 152 and 171 studs for 144" tracks.



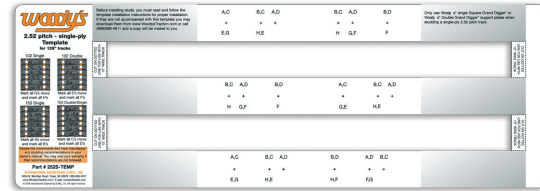
### 128 TEMPLATE

Woody's 128 Template will accommodate 13.5", 14" and 15" x 128" tracks. Patterns for 102 and 153 studs available.



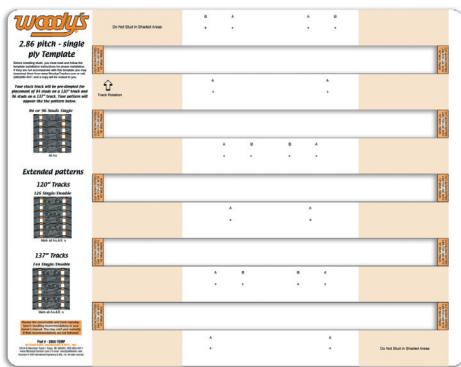
### 2.86 PITCH TWO PLY TEMPLATE

This template has patterns for standard two-ply tracks with a 2.86 pitch track. This template will accommodate 14", 15" and 16" wide tracks that are either 120" or 137" long. Patterns for the 120" track are 84, 105, 126, 147 and 168. Patterns for the 137" track are 96, 120, 144 and 192.



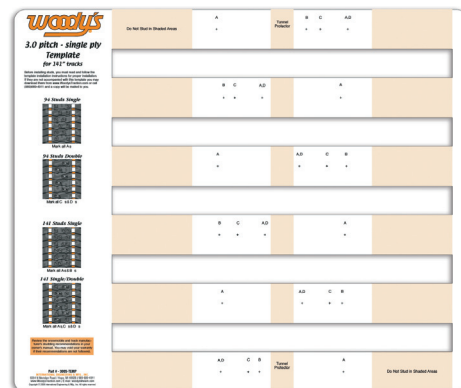
### 2.52 PITCH SINGLE-PLY TEMPLATE

A special template for single-ply tracks with a 2.52 pitch. This template will accommodate 14" and 15" x 128" tracks. It has multiple options for center belt studding with or without Double Grand Digger<sup>®</sup> support plates. Patterns for 102 and 153 studs available.



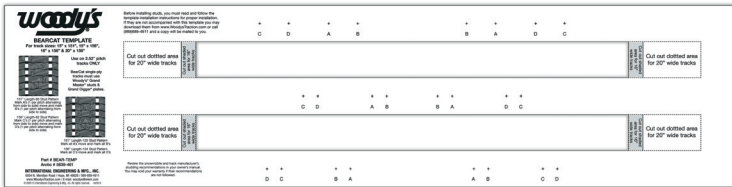
### 2.86 PITCH SINGLE-PLY TEMPLATE

A special template for single-ply tracks with a 2.86 pitch. This template will fit 15", 16" x 120" and 15", 16" x 137" tracks. A stock track will be pre-dimpled for placement of 84 studs on a 120" track and 96 studs on a 137" track. This template offers extended patterns for 126 studs on a 120" track and 144 studs on a 137" track.



### 3.0 PITCH SINGLE-PLY TEMPLATE

A special template for single-ply tracks with a 3.0 pitch. This template will accommodate 15" x 141" tracks. It has multiple options for center belt studding with or without Double Grand Digger<sup>®</sup> support plates. Patterns for 94 and 141 studs available.



### BEARCAT TEMPLATE

The BearCat Template will fit 2.52 pitch single ply and two ply tracks that measure 15, 16 & 20 x 156" and 15 x 151". Patterns of 60 and 120 studs for 151" tracks and patterns of 62 and 124 studs for 156" tracks.



### BEARCAT 154" SINGLE PLY TEMPLATE

The BearCat 154" Template will fit 2.86 pitch single ply tracks. This template has a pattern for 108 single studs.



# FLAT-TOP® CARBIDE RUNNERS

## DOOLY™ SERIES

The Dooly™ runner will help decrease darting of your sled as it makes its own groove in the trail. The tucked front end will ensure stability. In addition, the **TWO** 7/16" Flat-Top® runners are available in 4", 6" or 8" of 60° turning carbide to accommodate all types of trail riders. Each Dooly™ runner is packaged individually.

## 10" ULTRA™ SERIES

The Ultra™ runner is for the trail rider that likes the performance of a heavily studded track. The 10" of 60° turning carbide provides essential balance between rear and front control for the heavy trail sled with lots of horsepower. Proper track studding with these runners is mandatory.

## 8" EXECUTIVE™ SERIES

A beefy 1/2" diameter runner with lots of turning carbide for many forms of competition and experienced riders. Performance trail riders are known to use this runner. The 8" of 60° edged carbide translates into extreme turning power. A 1-1/2" carbide wear pad helps prevent premature runner wear.

## 6" TRAIL BLAZER IV™ SERIES

This 1/2" diameter runner is designed for trail riders with strong right thumbs. The 6" of 60° sharp turning carbide provides more cornering power and control to riders who enjoy faster riding, particularly in the twisty sections of the trail where cornering control makes a big difference. A 1-1/2" carbide wear pad helps prevent premature runner wear.

## 4" EXTENDER TRAIL III™ SERIES

This 7/16" diameter is a popular runner for trail riding. Woody's offers the Extender Trail III™ line to replace the manufacturer's stock runners. The 4" of 60° turning carbide will give more positive cornering control. Our guideline for consideration of these runners would be for sleds with up to 96 studs installed in the track.

## TOP-STOCK™ SERIES

Top-Stock™ is an economical hardweld runner designed for extreme service or utility applications. The 1/2" host bar with hardweld increases the depth of the runner for added controllability. Recommended for deep snow or snowmobiles with 48 or fewer studs installed.

## STANDARD WEAR BARS

Woody's is proud to announce a new line of standard wear bars for a wide variety of sleds.

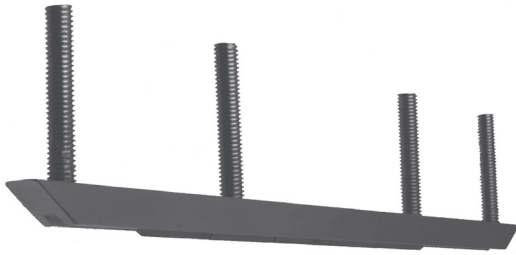
## SHUR-STEER™ POLARIS

(Not Shown)

The Shur-Steer™ carbide runner is a Woody's replacement for Polaris models equipped with EZ Steer runners. The three models available are:

- Shur-Steer™ Extender Trail III™ - 4" of 60° carbide and full length hardweld.
- Shur-Steer™ Trail Blazer IV™ - 6" of 60° carbide and full length hardweld.
- Shur-Steer™ Executive™ Series - 8" of 60° carbide and full length hardweld.





## HOLLOW SQUARE RUNNERS

Woody's Hollow Square runner is for the professional sno-cross racer and the high elevation, deep snow snowmobiler. It is 34% lighter than a solid steel sno-cross runner. The deep square configuration comes with 10" of 60° turning carbide for the C&A and SLP skis and 8" of 60° turning carbide for the Outlaw competition ski.



## SLIM JIM® DOOLY™

The design of this runner is specifically for riders who love the reduced darting feature of Woody's original Dooly™ and also want a more performance enhanced product when cornering. Woody's® Slim Jim® is more responsive in the corners and comes in at a whopping 31% lighter than our original Dooly™. Available with 4", 6" and 8" of 60° turning carbide.

International Eng. & Mfg., Inc. is licensed to manufacture the patented product of Polaris Industries, Inc. covered under US Patent No. 7,090,229 B2

The following are trademarks and/or trade names of International Engineering & Manufacturing, Inc. and should include the appropriate symbol when mentioned:

**GOLD DIGGER®**

**TRACTION MASTER®**

**GRAND MASTER®**

**GRAND MASTER PRO™**

**CHISEL TOOTH™**

**SIGNATURE SERIES™**

**MEGA-BITE®**

**ELIMINATOR™**

**GRIP KIT™**

**GRIPPER™**

**HOOKER®**

**SNAP-OFF®**

**FLAT-TOP®**

**DOOLY™**

**SLIM JIM® DOOLY™**

**SHUR-STEER™**

**TOP-STOCK™**

**EXTENDER TRAIL III™**

**TRAIL BLAZER IV™**

**EXECUTIVE™**

**ULTRA™**

**WOODY'S® (Where applicable)**

**TEAM WOODY'S®**

**SQUARE DIGGER® SUPPORT PLATES (Also, applies to colored support plates)**

**ROUND DIGGER® SUPPORT PLATES (Also, applies to colored support plates)**

**DOUBLE DIGGER® SUPPORT PLATES (Also, applies to colored support plates)**

**ANGLED DIGGER® SUPPORT PLATES**

**ANGLED DOUBLE DIGGER® SUPPORT PLATES**

**TRIANGLE DIGGER® SUPPORT PLATES**

**ROUND GRAND DIGGER®, SQUARE GRAND DIGGER® & DOUBLE GRAND DIGGER®**

**PAIL PAL™**

## Woody's ATV/UTV accessory market

Woody's® Pail Pal™

# Pail Pal™



*"Different than anything else on the market."*

Woody's introduces the Pail Pal™ -- an ATV/UTV Bucket Hauler System. The Pail Pal™ provides the rider with more space by freeing up racks for bulkier cargo and a level of safety with a design that attaches at the hitch which lowers the center of gravity. In addition, it reduces lifting distance by 50% and is easy to install and uninstall. It is made of heavy gauge steel for strength and powder coated for a durable finish. Woody's unique design allows the Pail Pal™ to be removed with the pull of a pin. Available in two receiver sizes 1 1/4" & 2". (23 lbs. ship weight)  
1/2" Clevis pin and safety clip included --- Hitch receiver and buckets not included



On the Farm



In the Woods



On the Ice



## Woody's Motorcycle accessory market

### TRIANGLE MOTORCYCLE STAND

The "W" shaped Triangle Stand design makes it stable on uneven ground. It is constructed from high-quality carbon steel and zinc plated for rust and corrosion protection. Weighs 1.8 lbs. Made in the USA.